



**2021**

## **Home Office Catalog**



Posture Depot  
179 Gasoline Alley, Ste. 203  
 Mooresville, NC 28117

## **The Home Office Experts**

This home office catalog contains a selection of our high-quality, cost-effective ergonomic solutions that will provide individuals working a hybrid or fully-remote schedule with the tools necessary to set up a healthy, ergonomic, and productive workspace at home.

We're extremely adept at delivering home office solutions, having equipped thousands of home workspaces for industry leaders in Financial Services, Pharmaceutical, Technology, Insurance, Apparel and many more.

Our "quick-ship" program utilizes multiple warehouses for super-fast residential delivery. We also offer nationwide installation services for our furniture packages. Each client receives free training and ergonomic reference materials to maximize work safety and return on investment.

The "web price" listed for each item reflects the current internet pricing through our website. When ordering, after all selected items are added to the shopping cart, enter the coupon code "**HOME**" at checkout to receive 10% off the entire shopping cart as well as free shipping.

For a broader selection of ergonomic furniture and accessories, for both the home and contemporary office, please visit our website at [www.PostureDepot.com](http://www.PostureDepot.com).

If you can't find what you are looking for, give us a call and we will find it. We guarantee innovative solutions, expert ergonomic advice, and outstanding customer service!

### **Table of Contents**

<b>Ergonomic Chairs</b> .....	3
<b>Sit-Stand Desks &amp; Workstations</b> .....	6
<b>Fixed-Height Desks</b> .....	10
<b>Mice</b> .....	11
<b>Keyboards</b> .....	12
<b>Monitor Mount Systems</b> .....	13
<b>Laptop Stands</b> .....	14
<b>Footrests</b> .....	15
<b>Anti-Fatigue Mats</b> .....	16
<b>Document Holders</b> .....	17
<b>Wrist Rests</b> .....	18
<b>Headsets</b> .....	19
<b>Posture Supports and Other Accessories</b> .....	20

## Ergonomic Chairs

### SOHO High Back Ergonomic Chair

**Web Price: \$279.00**

**Code for 10% Off Web Price & Free Shipping: "HOME"**

**Description:**



The SOHO High Back Ergonomic Chair's breathable mesh back, adjustable-height arms and body-weight adjustable mechanism with four-tilt position lock delivers customized comfort.

Features a fabric-upholstered seat that conveniently slides for the best position, and a nylon base equipped with dual-wheel casters for smooth rolling.

**Features:**

- Multi-function mechanism
- Pneumatic seat height adjustment
- Adjustable height armrests
- Adjustable seat slider
- Adjustable lumbar support

**Specifications:**

- Weight Capacity: 250 lbs.
- Seat Dimensions: 19.5"W x 20"D
- Backrest Dimensions: 18.5"W x 21.5"H
- Armrest Height Adjustment: 8.5" - 12.25" (above seat)
- Seat Height Range: 16.75" – 20.5"
- Color: Black
- Warranty: 3 Years
- Lead Time: 2-5 business days

**Web Link:**

[SOHO High Back Ergonomic Chair](#)

### HW Basics Plus Office Chair

**Web Price: \$299.00**

**Code for 10% Off Web Price & Free Shipping: "HOME"**

**Description:**



A breathable mesh back with built in lumbar support and soft, padded seat cradles your body throughout the workday letting you keep your focus and stay productive. Multiple adjustments make it easy to customize your seating experience, from seat height, to tilt, to arm height, to back height.

\*If shorter than 5'7" we recommend utilizing a footrest. You can place a small box under your feet to improvise, or order a footrest (options below).

**Features:**

- 2-to-1 synchro tilt control with adjustable tilt tension
- One touch pneumatic seat height adjustment
- Height adjustable arms
- Ratchet back lumbar height adjustment

**Specifications:**

- Weight Capacity: 250 lbs.
- Seat Dimensions: 20.25"W x 19.25"D
- Backrest Dimensions: 19"W x 21.25"H
- Armrest Height Adjustment: 7" - 9" (above seat)
- Seat Height Range: 18.0" – 22.0"
- Ratchet Back Adjustment Range: 3.5"
- Color: Black
- Warranty: 5 years on parts  
3 years on upholstery
- Lead Time: 3-7 business days

**Web Link:**

[HW Basics Plus Office Chair](#)

## HW High Back Office Chair

**Web Price: \$339.00**

**Code for 10% Off Web Price & Free Shipping: "HOME"**

### Description:



A breathable mesh back with built in lumbar support and soft, padded seat cradles your body throughout the workday letting you keep your focus and stay productive. Multiple adjustments make it easy to customize your seating experience, from seat height and depth, to tilt, to arm height, to back height.

\*If shorter than 5'7" we recommend utilizing a footrest. You can place a small box under your feet to improvise, or order a footrest (options below).

### Features:

- 2-to-1 synchro tilt control with adjustable tilt tension
- One touch pneumatic seat height adjustment
- Height adjustable arms
- Adjustable seat depth

### Specifications:

- Weight Capacity: 250 lbs.
- Seat Dimensions: 20.25"W x 19.0"D
- Backrest Dimensions: 19"W x 23"H
- Armrest Height Adjustment: 7.5" - 10" (above seat)
- Seat Height Range: 19.0" – 22.5"
- Color: Black
- Warranty: 5 years on parts  
3 years on upholstery
- Lead Time: 3-7 business days

### Web Link:

[HW High Back Office Chair](#)

## Square Mesh Back Office Chair

**Web Price: \$389.00**

**Code for 10% Off Web Price & Free Shipping: "HOME"**

### Description:



The Square Mesh Back Chair provides dynamic support and the mesh back allows for cooling airflow, ensuring comfortability in any environment.

The Square comes standard with a synchro-tilt mechanism and adjustment controls to perfectly fit your body to the chair. These include adjustable arm rest, lumbar support, and seat slider.

### Features:

- 5-to-1 synchro tilt control with adjustable tilt tension
- One touch pneumatic seat height adjustment
- Adjustable height armrests
- Adjustable seat depth
- Adjustable lumbar height adjustment

### Specifications:

- Weight Capacity: 300 lbs.
- Seat Dimensions: 19"W x 19"D
- Backrest Dimensions: 19"W x 21.6"H
- Armrest Height Adjustment: 2.75" (above seat)
- Seat Height Range: 15.2" – 19.0"
- Color: Dark Gray Seat, Black Mesh Backrest
- Warranty: 3 Years
- Lead Time: 3-7 business days

### Web Link:

[Square Mesh Back Office Chair](#)

## tCentric Hybrid High Back Chair – Quick Ship

**Web Price: \$679.00 (Upholstered Back) or \$749.00 (Mesh Back)**

**Code for 10% Off Web Price & Free Shipping: "HOME"**



### Description:

The tCentric Hybrid with Airless Cushion Technology combines the best attributes of the leading mesh chair with the industry leading benefits of a fully ergonomic upholstered chair. You no longer have to choose between the sleek appearance and breathability of a mesh chair and great ergonomics.

The tCentric comes standard with a multi-featured seat mechanism and adjustment controls to perfectly fit your body to the chair. These include adjustable arm rest, lumbar support, seat slider, height adjustable back rest, and backrest angle adjustment.

Other fabric color and configuration options available at extended lead times (see link below).

### Features:

- Multi-tilt mechanism
- Pneumatic seat height adjustment
- Adjustable height/width armrests
- Adjustable seat depth
- 5" patented back height adjustment system
- Dual density foam seat
- Dual curve mesh backrest
- Air Lumbar (Upholstered) and Std. Lumbar (Mesh Back)

### Specifications:

- Weight Capacity: 350 lbs.
- Seat Dimensions: 20"W x 19"D (others available)
- Backrest Dimensions: 19"W x 25"H
- Armrest Height Adjustment: 6" - 9" (above seat)
- Armrest Width Adjustment: 2"
- Color: Black (others available – call for details)
- Warranty: Lifetime on defects up to 350 lbs.  
12 Years on Mechanisms, Arms, Foam, and Fabric
- Lead Time: 3-7 business days – ships within 24 hrs.

### Gas Stem Options:

- 70mm Gas Stem: 15.50" – 18.25"
- 125 mm Gas Stem: 15.75" – 20.25" (Standard)
- 140mm Gas Stem: 17.75" – 23.00"

### Web Link:

[tCentric Hybrid Upholstered High Back Ergonomic Chair - Quick Ship Option](#)

[tCentric Hybrid Mesh Back Ergonomic Chair - Quick Ship Option](#)

[tCentric Hybrid High Back Ergonomic Chair – Other Color & Configuration Options – Extended Lead Time](#)



Posture Depot  
179 Gasoline Aly, Ste. 203  
Mooresville, NC 28117

5

T: 704-999-0809  
[www.PostureDepot.com](http://www.PostureDepot.com)  
E: James@PostureDepot.com

# Sit-Stand Desks & Workstations

## Oploft Sit-Stand Platform

**Web Price: \$329.00**

**Code for 10% Off Web Price & Free Shipping: "HOME"**

### Description:

Our most portable sit-stand workstation yet, the Oploft is beautifully slim and light without compromising quality or stability. The secret of Oploft's strength lies in the unique cross-structure frame, which not only gives the platform a minimalist, classically Scandinavian aesthetic when extended to standing height, but also enables it to fold neatly into its own footprint when you want to sit down or store it away. Simply push the handles on either side to float the surface effortlessly to any of the 14 height settings.

The Oploft is half the weight of its rivals and perfectly proportioned to be moved between any surface, anywhere.

### Features:

- 14 height settings give you the freedom to sit or stand
- Gas lift technology makes height adjustment nearly effortless
- Cross structure design offers style and stability
- Slim 1.2 inch profile when flat
- Sleek, contemporary design inspired by Scandinavian minimalism
- Single and Dual monitor systems available
- No assembly is required

### Specifications:

- Platform Dimensions: 31"W x 24"D
- Height Range: 1.2 - 17"
- Maximum Operational Weight Capacity: 26 lbs.
- Fits on 23.5" depth and above surfaces
- Color: White
- Warranty: 18 month
- Lead Time: 3-7 business days

### Videos:

[Meet Oploft: the world's first truly agile sit-stand platform](#)

[What happens when you give office workers Oploft sit-stand desks?](#)

### Web Link:

[Oploft Sit-Stand Platform](#)



## DeskRite 100 Sit-Stand Workstation

**Web Price: \$349.00**

**Code for 10% Off Web Price & Free Shipping: "HOME"**



### Description:

Instantly convert any surface into a sit-stand desk with the stylish DeskRite 100. Simply pull the levers to move the dual-level surface to your desired height and enjoy a sturdy, ergonomic work surface for your monitors, devices and documents. No other sit-stand workstation packs the features and ergonomic benefits of the DeskRite 100!

The DeskRite 100 effortlessly extends vertically within its own footprint resulting in a more streamlined, compact sit-stand solution. Other popular brands extend forward and impede work space. The DeskRite 100 is the only sit-stand desktop solution that accommodates up to three 24" monitors (monitor arms sold separately).

### Features:

- "Smart-Lift" vertical lifting system
- Patent-pending Torque Controllers to aid lifting
- Accommodates up to three 24" monitors
- Sliding keyboard tray
- Integrated Cable Management System
- Single, Dual, and Triple monitor systems available
- No assembly is required

### Specifications:

- Platform Dimensions: 35"W x 23.5"D
- Keyboard Tray Dimensions: 25.5"W x 10.5"D
- Height Range: 5 - 20"
- Maximum Operational Weight Capacity: 40 lbs.
- Fits on 23" depth and above surfaces
- Color: Black or White
- Warranty: 3 years
- Lead Time: 3-7 business days

### Video:

[DeskRite 100 Demo Video](#)

### Web Link:

[DeskRite 100 Sit-Stand Workstation](#)



## HW Electric Dual Column Sit-Stand Desk

**Web Price: \$449.00 (with 48" L x 24" W Maple Top)**

**Professional Installation Services: Call for Quote**

**Code for 10% Off Web Price & Free Shipping: "HOME"**

### Description:

The SQ Height-Adjustable Dual Column Electric Desk allows workers to easily alternate between seated and standing positions throughout the work day to reduce stress and tension, as well as to improve circulation throughout the body.

Sturdy construction and a great price make this one of the best adjustable height desks in the US.

**With an electrical height adjustment from 26 3/4" – 46 1/2", this desk is best for individuals taller than 5'8". For people under 5'8", select Series 37 Desk below.**

Choose from five table top color options and four table top size options.

### Specifications:

- Height range: 26.75" – 46.50"
- Lift speed: 1.0"/sec
- Weight capacity: 110 lbs.
- Leg Stages and Motors: 2-Stage, 1-Motor
- Desk Top Sizes: multiple (Ex. 48" x 24")
- Frame Color Option: Silver
- Table Top Color Options: Charcoal, Mahogany, Maple, Walnut, White
- Hi/Lo Controller: up/down position buttons only
- Warranty: 5 years motor and metal parts;  
3 years desk top
- Lead Time: 3-7 business days

### Table Top Color Options:



### Web Link:

[HW Electric Dual Column Sit-Stand Desk](#)





## Series 37 Height-Adjustable Dual Column Electric Desk

**Web Price: \$649.00 (with 48" L x 24" W Top)**

**Professional Installation Services: Call for Quote**

**Code for 10% Off Web Price & Free Shipping: "HOME"**

### Description:

The Series 37 Height-Adjustable Dual Column Electric Desk allows workers to easily alternate between seated and standing positions throughout the work day to reduce stress and tension, as well as to improve circulation throughout the body.

The three stage nested column design ensures a stable desk while a range of frame elevation from 22" to 48" make this frame a versatile choice that accommodates individuals from the 5th to 95th percentile. The 220 lbs. weight range provides enough power for most purposes.

Choose from three frame colors, four table top color options and four table top size options.

### Specifications:

- Height range: 22.0" – 48.0"
- Lift speed: 1.2"/sec
- Weight capacity: 220 lbs.
- Leg Stages and Motors: 3-Stage, 1-Motor
- Desk Top Sizes: multiple (Ex. 48" x 24")
- Frame Color Options: Black, White, Silver
- Table Top Color Options: Charcoal, Mahogany, Walnut, White
- Hi/Lo Controller: up/down position buttons only
- Warranty: 5 years motor and metal parts;  
3 years desk top
- Lead Time: 3-7 business days

### Table Top Color Options:



Weathered Charcoal



Mahogany



Walnut



White

### Web Link:

[Series 37 Height-Adjustable Dual Column Electric Desk](#)



## Fixed-Height Desks

### HW Basics Folding Desk

**Web Price: \$166.00**

**Code for 10% Off Web Price & Free Shipping: "HOME"**

#### Description:

Outfit your home office with the versatile HW Basics Folding Desk. Keep it standing ready to be your everyday work space, or fold it for compact storage when it's not needed. Its minimalist style makes it ideal for a personal workstation or a collaborative workplace.

#### Specifications:

- Dimensions: 43"W x 24"D x 30"H
- Weight Capacity: 110 lbs.
- Color Options: Black Frame with Walnut or Charcoal Top



**Web Link:** [HW Basics Folding Desk](#)

### HW Basics Fixed Height Single Drawer Desk

**Web Price: \$189.00**

**Code for 10% Off Web Price & Free Shipping: "HOME"**

#### Description:

The elegant and modern HW Basics Single Drawer Desk fixed-height desk is the perfect addition to your home office. This stylish desk includes a sleek laminate top with PVC edge-banding and one drawer in the center for adequate storage. Its sturdy steel tube legs are powder coated for durability and are equipped with levelling feet guides for additional stability.

#### Specifications:

- Dimensions: 47"W x 23.5"D x 30"H
- Weight Capacity: 200 lbs.
- Color Options: Black Frame with Walnut or Charcoal Top



**Web Link:** [HW Basics Fixed Height Single Drawer Desk](#)

### HW Basics Fixed Height 3-Drawer Desk

**Web Price: \$245.00**

**Code for 10% Off Web Price & Free Shipping: "HOME"**

#### Description:

The HW Basics Fixed Height 3-Drawer Desk is the perfect size for your home office. This desk includes a laminate top and three side drawers, including one file drawer. Its sturdy steel tube legs are powder-coated for durability and equipped with leveling feet guides for stability.

#### Specifications:

- Dimensions: 55"W x 23.6"D x 30"H
- Weight Capacity: 200 lbs.
- Color Options: Black Frame with Walnut or Charcoal Top



**Web Link:** [HW Basics Fixed Height 3-Drawer Desk](#)

## Mice

### VB Full Size Mouse

**Web Price: \$20.00 (Wired) or \$30.00 (Wireless)**

**Code for 10% Off Web Price & Free Shipping: "HOME"**

#### **Description:**

Navigate virtually anywhere with the VB Full Size Mouse. Blue LED technology allows you to point and click on more surfaces than other mice from a glass table to the granite kitchen counter to airport carpeting. Contour ergonomic friendly shape and easy grip surface let you use this mouse comfortably for hours.

#### **Specifications:**

- Compatible with Windows XP, 2000, Vista, 7, 8, 10; Mac OS
- Dimensions: 3.9"W x 2.5"D x 1.5"H
- Warranty: 1 Year

**Web Link:** VB Full Size Mouse – [Wired](#) or [Wireless](#)



### Goldtouch Comfort-fit Mouse

**Web Price: \$69.00 (Wired) or \$89.00 (Bluetooth)**

**Code for 10% Off Web Price & Free Shipping: "HOME"**

#### **Description:**

Designed to mirror your hand in a weightless environment, the Comfort Mouse supports your arm's natural position and alleviates pressure on tendons and joints.

#### **Specifications:**

- Plug-and-play technology allows immediate use
- Compatible with Windows XP, 7-10; Mac OS 10.14+
- Dimensions: 4.5"L x 3.125"W x 2.0"H

**Web Link:** [Goldtouch Comfort-fit Mouse](#)



### Penguin Ambidextrous Vertical Mouse

**Web Price: \$69.00 (Wired) or \$89.00 (Wireless)**

**Code for 10% Off Web Price & Free Shipping: "HOME"**

#### **Description:**

The Penguin sets new standards of protection against a range of upper limb conditions such as repetitive strain injury (RSI) and carpal tunnel syndrome (CTS) by enabling right and left hands to share the workload and avoiding exaggerated movements of the wrist joint that can increase pressure on the soft tissues in the carpal tunnel.

#### **Specifications:**

- Compatible with Windows XP, 2000, Vista, 7, 8, 10; Mac OS
- Three sizes available (small, medium, large)
- Antimicrobial covering

**Web Link:** [Penguin Ambidextrous Vertical Mouse](#)



## Keyboards

### VB Slimline Keyboard

**Web Price: \$15.00 (Wired) or \$25.00 (Wireless)**

**Code for 10% Off Web Price & Free Shipping: "HOME"**

#### **Description:**

The VB Slimline Keyboard offers a great typing experience with its sleek, yet sturdy design and convenient, plug-and-play USB connectivity. It features low-profile keys and adjustable tilt legs for quiet, comfortable typing. Its layout provides a full numeric keypad and full-size function keys, all within a slim, efficient design.

#### **Specifications:**

- Plug-and-play technology allows immediate use
- Compatible with Windows XP, 7-10, Vista, 2000; and MAC OS 10.4
- Warranty: 1 Year



**Web Link:** VB Slimline Keyboard – [Wired](#) or [Wireless](#)

### Number Slide Compact Ergonomic Keyboard

**Web Price: \$59.00 (Wired) or \$89.00 (Bluetooth)**

**Code for 10% Off Web Price & Free Shipping: "HOME"**

#### **Description:**

The Number Slide's retractable number pad slides out when you need it and away when you are finished. This reduces the distance needed to reach and use the mouse, allowing you to adopt a more comfortable and healthy posture when using your mouse and keyboard. Ultra slim and compact to fit easily into a briefcase or laptop bag.

#### **Specifications:**

- Plug-and-play technology allows immediate use
- Compatible with Windows XP, 2000, Vista, 7, 8, 10; Mac OS
- Dimensions: 11.7"H x 5.6"D x 1.0"H



**Web Link:** [Number Slide Compact Ergonomic Keyboard](#)

### Goldtouch V2 Adjustable Comfort Wired Keyboard

**Web Price: \$119.00**

**Code for 10% Off Web Price & Free Shipping: "HOME"**

#### **Description:**

The Goldtouch V2 Adjustable Comfort Keyboard is uniquely designed to adjust from 0-30° on the horizontal plane to properly straighten your wrists, and 0-30° of vertical tenting to help alleviate inward turning of the wrists, reducing pressure on tendons, and aligning the arms and shoulders in a natural and comfortable position.

#### **Specifications:**

- Plug-and-play technology allows immediate use
- Compatible with Windows XP, 7-10, Vista, 2000; and MAC OS 10.4
- Dimensions: 16.25"W x 6.75"D x 1.25"H



**Web Link:** [Goldtouch V2 Adjustable Comfort Wired Keyboard](#)

## Monitor Mount Systems

### HW Basics Laptop/Tablet Mounting Adapter

**Web Price: \$35.00**

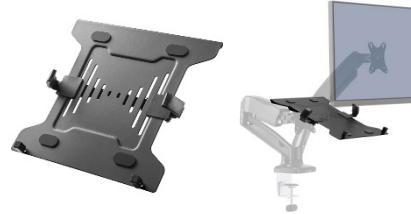
**Code for 10% Off Web Price & Free Shipping: "HOME"**

#### Description:

The HW Basics Laptop/Tablet Mounting Adapter is designed to enhance the working experience with your screen. Its adjustable lever lets you adjust the width for use with multiple sizes of laptops from 10.0" to 15.6". Its open design offers increased air circulation for device ventilation, and the Safety Ledge Stopper prevents your devices from slipping.

#### Specifications:

- Screen Size Supported: 10.0" – 15.6"
- Weight: 3.64 lbs.
- VESA Mount Pattern: 75 x 75, 100 x 100



**Web Link: [HW Basics Laptop/Tablet Mounting Adapter](#)**

### HW Basics Single Monitor Arm

**Web Price: \$99.00**

**Code for 10% Off Web Price & Free Shipping: "HOME"**

#### Description:

The flexible HW Basics Single Monitor arm lets you rotate, extend, swivel, and tilt your monitor with just a light touch, so it's easy to position your screen exactly where you want it. Sturdy C-clamp and grommet mount bases are included with your monitor mount, making for a simple and hassle-free installation process.

#### Specifications:

- Height Adjustment: 6.3" – 16.1"
- Weight Capacity: 14 lbs.
- VESA Mount Pattern: 75 x 75, 100 x 100



**Web Link: [HW Basics Single Monitor Arm](#)**

### HW Basics Dual Monitor Arm

**Web Price: \$129.00**

**Code for 10% Off Web Price & Free Shipping: "HOME"**

#### Description:

The flexible HW Basics Dual Monitor arm lets you rotate, extend, swivel, and tilt your monitors with just a light touch, so it's easy to position your screen exactly where you want it. Sturdy C-clamp and grommet mount bases are included with your monitor mount, making for a simple and hassle-free installation process.

#### Specifications:

- Height Adjustment: 6.3" – 16.1"
- Weight Capacity: 14 lbs. per arm
- VESA Mount Pattern: 75 x 75, 100 x 100



**Web Link: [HW Basics Dual Monitor Arm](#)**

## Laptop Stands

### Cricket Laptop & Tablet Stand

**Web Price: \$49.00 (min qty. 10)**

**Code for 10% Off Web Price & Free Shipping: "HOME"**

#### **Description:**

The Cricket is a fold up portable laptop and tablet stand that elevates the screen for cool computing and comfortable ergonomic viewing. Cricket allows you to adjust screen height as desired and helps air to circulate.

#### **Specifications:**

- Dimensions (folded): 1"W x 8"D x 2"H
- Color: Black
- Warranty: 1 year



**Web Link: [Cricket Laptop & Tablet Stand](#)**

### Slim Cool Laptop Stand

**Web Price: \$59.00**

**Code for 10% Off Web Price & Free Shipping: "HOME"**

#### **Description:**

The Slim Cool Laptop Stand allows laptop and tablet users to raise the screen to eye level, preventing stress and strain on the neck. The Slim Cool is height adjustable and mobile, folding flat to less than a half an inch to fit into any laptop case.

#### **Specifications:**

- Dimensions (folded): 7"W x 10"D x 0.4"H
- Color: Silver with Black Side Bars
- Warranty: 2 Years



**Web Link: [Slim Cool Laptop Stand](#)**

### Bakker Ergo-Q 260 Laptop Stand

**Web Price: \$129.99**

**Code for 10% Off Web Price & Free Shipping: "HOME"**

#### **Description:**

The Ergo-Q 260 is a lightweight and portable laptop stand solution that is ideal for work on the go. Five height adjustments allow you to raise your screen to a posture-enhancing height and avoid the strain of looking down while you work. The award winning design incorporates a document holder and fits all laptops up to 15 1/5".

#### **Specifications:**

- Dimensions (folded): 12"L x 9"W x 2"H
- Color: Silver
- Warranty: 2 Years



**Web Link: [Bakker Ergo-Q 260 Laptop Stand](#)**

## Footrests

### HW Basics Footrest

**Web Price: \$49.00**

**Code for 10% Off Web Price & Free Shipping: "HOME"**

**Description:**

The HW Basics Footrest adjusts in height on three levels, from 4.0" to 6.5". The ergonomic design supports your legs at the most comfortable height and tilt. Surface bumps massage feet and improve circulation. Simple foot action adjusts tilt smoothly and quietly.

**Specifications:**

- Surface bumps massage feet and improve circulation
- Footplate Height Adjustments: 4.0", 5.0", 6.5"
- Warranty: 1 Year



**Web Link:** [HW Basics Footrest](#)

### TriRite Multi-Angle Footrest

**Web Price: \$79.00**

**Code for 10% Off Web Price & Free Shipping: "HOME"**

**Description:**

The TriRite footrest is simplicity itself. With 3 angle adjustments of 10°, 20° and 33° and endless footplate movement, the TriRite will support your feet and legs comfortably while you work. The flexibility of position and easy movement, encourages circulation and provides support to aching or tired legs and feet.

**Specifications:**

- Footplate Dimensions: 16"W x 12"D
- Footplate Height Adjustments: 2", 3.5", and 5"
- Footplate Angles: 10°, 20° and 33°



**Web Link:** [TriRite Multi-Angle Footrest](#)

### MoovRite – Rocking Standing Platform and Footrest

**Web Price: \$99.00**

**Code for 10% Off Web Price & Free Shipping: "HOME"**

**Description:**

The MoovRite is a standing board and footrest that promotes both backward/forwards and side-to-side movement to fight the unhealthy effects of static posture. This movement activates the core while encouraging oxygen and blood-flow to the brain for sharper focus on work.

**Specifications:**

- Dimensions: 17.7"L x 15.7"W x 2.8"H
- Weight: 6 lbs.
- Color: Black



**Web Link:** [MoovRite – Rocking Standing Platform and Footrest](#)

## Anti-Fatigue Mats

### upCentric Anti-Fatigue Mat

**Web Price: \$60.00**

**Code for 10% Off Web Price & Free Shipping: "HOME"**

**Description:**

The upCentric Anti-Fatigue Mat can help reduce stress placed on the feet, knees and back when standing to use a sit-stand workstation or with any other application that requires you to stand for long periods of time. The mat supports the entire foot surface (no wobbling or sinking from high heel shoes), and also allows users to shift their weight evenly along the surface without any bottoming out.

**Specifications:**

- Dimensions: 18"L x 24"W x 0.75"T
- Can be used on carpeted or hard surfaces
- Warranty: 1 Year



**Web Link: [upCentric Anti-Fatigue Mat](#)**

### SF Anti-Fatigue Mat

**Web Price: \$90.00**

**Code for 10% Off Web Price & Free Shipping: "HOME"**

**Description:**

The SF Anti-Fatigue Mat offers a modern style that will look great in any work space. Use on most hard floors, including wood, cement and commercial office carpet. Molded glides on bottom allow mobility when you need it. The design allows you to grip with your foot to slide the mat out of way when not in use.

**Specifications:**

- Dimensions: 30"L x 20"W x 1"T
- Weight: 4 lbs.
- Color: Black



**Web Link: [SF Anti-Fatigue Mat](#)**

### Sit-Stand SmartMat

**Web Price: \$129.00**

**Code for 10% Off Web Price & Free Shipping: "HOME"**

**Description:**

Anti-fatigue mats are essential when standing at your desk. The Sit-Stand SmartMat slides easily out of the way when seated and back for a comfortable standing position. The patent-pending glide system allows you to move the mat effortlessly with your feet, instead of constantly bending over to move it.

**Specifications:**

- Dimensions: 21"L x 32"W x 5/8"H
- Available for carpeted or hard surfaces
- Warranty: 5 Years



**Web Link: [Sit-Stand SmartMat](#)**



## Document Holders

### Side Mount Document Holder

**Web Price: \$45.00**

**Code for 10% Off Web Price & Free Shipping: "HOME"**

**Description:**

Sleek, lightweight design works beautifully with flat panel monitors and traditional desktop CRT monitors. Grooved ledge with height adjustable clip secures sheets in portrait or landscape view. Swings out of way when not in use. Sheet capacity 35 sheets.

**Specifications:**

- Dimensions: 9"W x 10"D x 2.8"H
- Weight: 11.20 oz.
- Color: Black with Clear Acrylic



**Web Link:** [Side Mount Document Holder](#)

### DocuRite Multi-Position Document Holder & Writing Slope

**Web Price: \$89.00**

**Code for 10% Off Web Price & Free Shipping: "HOME"**

**Description:**

The DocuRite is an easily adjustable multi-position, acrylic document and writing slope. Four front steps allow the user to place the DocuRite securely over a desk front if needed for four extra viewing angles. Made of robust 5mm frosted acrylic.

**Specifications:**

- Dimensions: 19.3"L x 13.4"D x 1.8"H (front)
- Rear Height Adjustments: 4.7" | 5.7" | 6.7"
- Color: Clear Acrylic



**Web Link:** [DocuRite Multi-Position Document Holder & Writing Slope](#)

### MultiRite Document Holder & Writing Slope

**Web Price: \$149.00 (Standard)**

**Code for 10% Off Web Price & Free Shipping: "HOME"**

**Description:**

The MultiRite's unique two-in-one design reduces workday aches and pains by raising your documents to avoid awkward bends, twists, and turns. Make safe and optimal use of your workspace with multiple height and angle adjustments and a built in storage tray. Elegant design and sturdy construction throughout.

**Specifications:**

- Dimensions: 20.4"L x 13.8"W x 4.72"D
- Storage tray built-in
- Color: Silver and Black



**Web Link:** [MultiRite Document Holder & Writing Slope](#)

## Wrist Rests

### Gel Mouse Pad with Wrist Rest

**Web Price: \$25.00**

**Code for 10% Off Web Price & Free Shipping: "HOME"**

**Description:**

This gel mouse pad features an ergonomically contoured design. Soft gel-filled wrist rest soothingly conforms to wrists and palms and reduces pressure points for exceptional forearm and wrist comfort. Nonskid base holds mouse pad firmly in place.

**Specifications:**

- Dimensions: 9"L x 10"W x 1"H
- Weight: 1 lb.
- Color: Black



**Web Link:** [Gel Mouse Pad with Wrist Rest](#)

### ST Sliding Wrist Rest for Mouse

**Web Price: \$30.00**

**Code for 10% Off Web Price & Free Shipping: "HOME"**

**Description:**

Simply slide the desk wrist pad under your wrist anytime you use your mouse. Use it on your desk, table or sit-stand workstation. As you move your mouse, the wrist rest moves with you, providing comfort and slight cushioning. It's so light and comfortable, you'll hardly know it's there.

**Specifications:**

- Dimensions: 3.8"L x 3.8"W x 1.1"H
- Weight: 2.0 oz.
- Color: Silver



**Web Link:** [ST Sliding Wrist Rest for Mouse](#)

### Soft Skin Gel Wrist Rest

**Web Price: \$30.00**

**Code for 10% Off Web Price & Free Shipping: "HOME"**

**Description:**

The innovative wrist cushion for keyboards features a modern design with a cushioned top surface that works like a wrist pillow. It gently cradles your wrist to provide support, helping to keep your hands in a neutral position while you type. The attractive black finish complements most workstations.

**Specifications:**

- Dimensions: 18.1"L x 2.0"W
- Weight: 14.39 oz.
- Color: Black



**Web Link:** [Soft Skin Gel Wrist Rest](#)

## Headsets

### LT H800 Wireless Headset

**Web Price: \$139.00**

**Code for 10% Off Web Price & Free Shipping: "HOME"**

**Description:**

This comfortable, wireless headset lets you chat, rock and surf on multiple devices like your PC, tablet and smartphone with rich digital stereo, a six-hour rechargeable battery and a full set of on-ear controls.

**Specifications:**

- Connectivity: Bluetooth
- Wireless Operating Distance: 39.4 ft.
- Weight: 0.7 lbs.



**Web Link:** [LT H800 Wireless Headset](#)

### Plantronics Voyager 5200 Bluetooth Headset

**Web Price: \$219.00**

**Code for 10% Off Web Price & Free Shipping: "HOME"**

**Description:**

This Bluetooth headset features WindSmart technology to eliminate disruptive background noise whether you're in the office or driving in your car. Four adaptive microphones ensure your voice sounds natural and clear as you seamlessly transition between environments.

**Specifications:**

- Connectivity: Bluetooth
- Wireless Operating Distance: 98 ft.
- Weight: 0.4 lbs.



**Web Link:** [Plantronics Voyager 5200 Bluetooth Headset](#)

### Plantronics CS540 DECT with Lifter Headset System

**Web Price: \$399.00**

**Code for 10% Off Web Price & Free Shipping: "HOME"**

**Description:**

This convertible DECT headset delivers hands-free productivity, simple plug-and-talk installation, energy-efficient power management, and one-touch controls. Lightweight mobility allows you to multi-task hands-free up to 350'.

**Specifications:**

- Connectivity: Wireless – DECT
- Wireless Operating Distance: 350 ft.
- Weight: 0.74 lbs.



**Web Link:** [Plantronics CS540 DECT with Lifter Headset System](#)

## Posture Supports and Other Accessories

### Penguin Mouse Mat

**Web Price: \$9.95**

**Code for 10% Off Web Price & Free Shipping: "HOME"**

**Description:**

This circular mouse mat is incredibly thin with a gentle self cling reverse to stop it shifting across the desk. It will eliminate the differences that desk surfaces might have on the mouse performance and the surface of the mouse mat improves the movement and therefore the accuracy of the mouse. Ideal for use with the Penguin Mouse.

**Specifications:**

- Diameter: 8.5"
- Thickness: Less than 1 mm thick
- Color: Black



**Web Link: [Penguin Mouse Mat](#)**

### Mesh Lumbar Backrest Support

**Web Price: \$35.00**

**Code for 10% Off Web Price & Free Shipping: "HOME"**

**Description:**

Make your office chair more comfortable with this lumbar back support. Ergonomic design includes breathable mesh to cradle your spine. The wide elastic band attaches easily to your office chair.

**Specifications:**

- Dimensions: 17.8"W x 5.5"D x 15.4"H
- Weight: 1 lb.
- Color: Black



**Web Link: [Mesh Lumbar Backrest Support](#)**

### Deluxe Seat Cushion

**Web Price: \$50.00**

**Code for 10% Off Web Price & Free Shipping: "HOME"**

**Description:**

The Deluxe Seat Cushion utilizes memory foam to conform to the shape of your body and to help reduce back strain and fatigue. It can be used on the chair seat or chair back and has a washable cover. Attaches by hook-and-loop strips and/or included elastic strap.

**Specifications:**

- Dimensions: 17.5"L x 17"W x 2.8"H
- Material: Polyurethane and Memory Foam
- Color: Black



**Web Link: [Deluxe Seat Cushion](#)**



## **The Posture Depot Difference**

We offer unique ergonomic solutions that help employers reduce injuries and insurance claims while increasing employee productivity, satisfaction, and retention.

- Perform ergonomic workstation assessments by certified ergonomic professionals
- Supply high quality ergonomic equipment at a cost effective price
- Provide excellent after sales service and support 24/7/365
- Perform installation services
- Conduct employee training for every workstation provided (product set up, use, and proper body mechanics + ergonomic reference materials)
- Offer ergonomic phone consultation with licensed Ergonomists & Physical Therapists

## **The Posture Depot Promise**

We guarantee high-quality products and services at affordable prices while providing outstanding customer service.

**James Spurlin, AOEE**  
**Sales Manager**  
**M: 704-223-2747**  
**E: [James@PostureDepot.com](mailto:James@PostureDepot.com)**

**Posture Depot**  
**179 Gasoline Alley**  
**Suite 203**  
**Mooreville, NC 28117**